



Think ahead.

Tork Jumbo Toilet Roll Advanced

120257



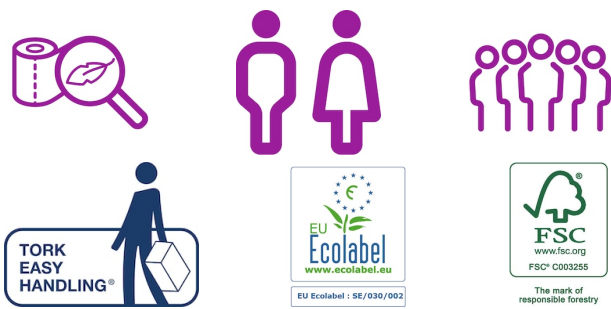
Description

The Tork Jumbo system stands for time efficiency and reduced cost, offering much more toilet paper than standard rolls. Tork Jumbo Roll Toilet Paper Advanced 2 ply balances cost and performance and is ideal for high-traffic locations.

- High capacity: less maintenance and reduced risk of paper shortage
- Attractive décor: designed to make a great impression

- High capacity: less maintenance and reduced risk of paper shortage
- Attractive décor: designed to make a great impression
- Advanced
- General public use
- Embossing
- High capacity

Certifications



Tork
Advanced

Product Details

Embossing	Yes
Print	No
Roll diameter	26.5 cm
Roll length	360 m
Sheet length	20 cm
Ply	2
Roll width	9 cm
Core inside diameter	5.9 cm
System	T1
Color	White

Shipping Data

	Consumer Units (CON)	Transport unit (TRP)	Pallet (PAL)
EAN	7322540527032	7322540527056	7322540716023
Packaging Material	Plastic	-	
Pieces	1	6 (6 CON)	192 (32 TRP)
Height	90 mm	270 mm	1,241 mm
Length	265 mm	530 mm	1,200 mm
Width	265 mm	265 mm	1,000 mm
Gross Weight	1,130.1 g	6.85 kg	219.2 kg
Net Weight	1,101.6 g	6.61 kg	211.51 kg
Volume	6.32 dm3	37.92 dm3	1.49 m3
Layers Per Pallet	-	-	4
TRP Per Layer	-	-	8

Compatible Products



Tork Jumbo Toilet Roll Disp Metal White
246040



Tork Jumbo Toilet Roll Dispenser White
554000



Tork Jumbo Toilet Roll Dispenser Black
554008

Environmental Information

Content	<p>The product is made from</p> <p>Fresh fibres</p> <p>The packaging material is made from paper or plastic.</p>
Material	<p>Fresh fibres</p> <p>Essity has an ambitious target that all raw materials derived from wood-based fresh fibre used in the production of our products is certified either in accordance with the FSC® or the Program for the Endorsement of Forest Certification (PEFC™). In addition, all wood-based fresh fibre shall fulfil the FSC® Controlled Wood standard, including third-party verification. The Essity Fibre Sourcing Policy describes this in more detail and can be found on www.essity.com.</p> <p>Fresh fibre pulp is produced from softwood or hardwood. The wood is subject to chemical and /or mechanical processes where the cellulose fibres are separated out and lignin and other residuals are removed.</p> <p>Bleaching is a cleaning process of the fibres and the aim is to achieve a bright pulp, but also to get a certain purity of the fibre in order to achieve the demands for hygiene products and in some cases to meet the requirements for food safety.</p>
Chemicals	<p>All chemicals (process aids as well as additives) are assessed from an environmental, occupational health and safety and product safety point of view.</p> <p>To control product performance we use additives:</p> <ul style="list-style-type: none">• Wet strength agents (for Wipers and Hand Towels)• Dry strength agents (are used together with mechanical treatment of the pulp to make strong products like wipers)• For coloured papers dyes and fixatives (to secure perfect fastness of the colour) are added• For printing products printing inks (pigments with carriers and fixatives) are applied• For multi ply products we often use water soluble glue to secure the integrity of the product <p>In most of our mills we do not add optical brighteners.</p> <p>We do not use softeners for professional hygiene products.</p> <p>High product quality is secured through quality and hygiene management systems throughout production, storage and transport.</p>

In order to maintain a stable process and product quality the paper manufacturing process is supported by the following chemicals/ process aids:

- defoamers (surfactants and dispersing agents)
- pH-control (sodium hydroxide and sulphuric acid)
- retention aids (chemicals that help to agglomerate small fibres to prevent fibre loss)
- Coating chemicals (that help to control the creping of the paper to make it soft and absorbent)

To reuse broke we use:

- Pulping aid (chemicals that help to repulp wet strong paper)

In the cleaning of our waste water we use flocculation agents and nutrients for the biological treatment to secure that no negative impact on water quality comes from our mills.

Environmental certification	<p>This product is certified with the EU Ecolabel with certificate number SE/004/001.</p> <p>This product is certified for FSC® with certificate number SA-COC-008266.</p>
Packaging	<p>Fulfilment of Packaging and Packaging Waste Directive (94/62/EC): Yes</p>
Article creation date and latest article revision	<p>Date of issue: 19-02-2025</p> <p>Revision date: 02-07-2025</p>
Production	<p>This product is produced at Skelmersdale - GB mill.</p>
Destruction	<p>This product is suitable to be taken care of in the normal sewage system of the community.</p>

Essity UK Ltd, Southfields Road, Dunstable, Bedfordshire LU6 3EJ, United Kingdom